



ECCO
CONFIDENCE THROUGH EXPERTISE



**COMPANY
PROFILE**

ecco-me.com



WHO WE ARE

ECCO's with a presence in over Egypt & Africa employing number of experienced full-time personnel and assessment services.

ECCO's is never very far from its clients.

It is easily recognized by all stakeholders as one of the most competent, ethical & professional service.

Being the market leader, we offer very comprehensive and diverse range of management & technical services to our clients.

Our clients are varied and are involved in all types of business activities including oil and gas, petrochemical, railways, vehicles manufacture, laboratories, training.

WHY CHOOSE US



Only Experienced
Manpower



Will be both courteous
and sensitive to your staff
at all times



Quick, flexible
and professionally
managed company



Seeks long-term
relationship with its
clients



Fully understand the
stress that people meets
during implementation



Believes in quality and
not quantity

MISSION >>>

- To grow and expand into International Markets by offering superior services to create an environment for employees to realize their full potential.
- To foster work environment supporting professional development, individual proficiency, and team integrity.
- To bring the industry a new standard of quality, crafts-man ship, safety and technical support at a competitive price, while making customer satisfaction our top priority.
- To work diligently to ensure that our clients that their project has our full attention and absolute focus at all its stages.

VISION >>>

To be the professional company of choice.

→ TO OUR CUSTOMERS

We deliver consistent services and excellent solutions.

→ TO OUR EMPLOYEES

We are an environment where employees feel secure to release their aspirations.

→ TO OUR SUPPLIERS

We honor our commitment and we are a vehicle for their long-term growth.

→ TO OUR BUSINESS PARTNER

We are trustworthy to our partners to achieve their business goals.





QUALITY POLICY

ECCO aims to promote, encourage awareness, environmental responsibility and help to continuously improve inspection and certification management issues within industry, commerce and the public domain.

We understand the importance of impartiality in carrying out our management system inspection/certification activities, manage conflict of interest and ensure the objectivity of our management system inspection/certification activities.

We wish to achieve our aims as a major international accredited ECCO and recognize that effective management of our customers, our staff, our inspection/certification process and our business results makes good business sense.

It will be a fundamental and integral part of our business strategy.

WE WILL ACHIEVE THIS BY:

- Offering an international inspection/certification service in accordance with IEC/ISO 1:2015-17021, IEC/ISO 17020:2012 & ILAC P15 that is fair impartial and objective to all who wish to avail themselves of our service.
- Providing our customers with a professional service that is perceived to add value to their business and satisfy their expectations.
- Practicing sound inspection/certification principles through competent staff.
- Caring for and valuing our staff.
- Brief and train our staff to deliver Audits that satisfy our customers, supervisory body and the standard we set.
- Developing an open exchange of information with organizations and the public on the inspection/certification service that we offer, Continuously improving the inspection/certification service, we offer.
- Practicing sound business principles to manage the ECCO and give a return on our shareholder's investment.
- Records of certified clients and previously certified clients shall be retained for the duration of the current cycle plus one full certification cycle.
- Communicating this policy to our staff, customers and interested parties.

CONFIDENTIALITY POLICY >>>

STAFF REQUIREMENTS

All information received by or available to ECCO, staff or committee members (in whatever format) received in conducting inspection/ audit activities, or during other certification activities, or during any dealings with an organization for any other reason shall be regarded as strictly confidential and shall not be divulged to any 3rd party (unless specified in IEC/ISO 17021:2015, IEC/ISO 17020:2012 & ILAC P15) without the express permission of the organization or individual concerned.

The requirement to keep confidential any information will also include any organization that has a legitimate right to audit or inspect ECCO.

Where ECCO, is required by law to release confidential information to a third party the client or individual concerned shall, unless regulated by law, be notified in advance of the information provided .

However where the organization is seen to be operating contrary to legal requirements or has operating practices which pose a danger to staff, customers or the environment ECCO, reserves the right to immediately report any such incident to the relevant authority. Any such reporting will only be undertaken with the permission of General Manager.

ACCESS TO RECORDS

All records will be retained in a secure manner, only accessible to authorized staff via either paper records or password controlled electronic records.

Sub-contractors will be limited to accessing information produced by them in conducting an inspection/audit.

Records will only be made available to organizations who can demonstrate a legitimate (and legal) right to view those records and specifically to Accreditation Bodies.

CONFIDENTIALITY DECLARATIONS

All staff, General Managers and Committee Members will be required to agree to ECCO, confidentiality policy and sign a confidentiality agreement.

Sub-contractors will also sign an agreement which also contains the responsibility to maintain confidentiality.

IMPARTIALITY POLICY >>>

1. All documents and information entrusted by ECCO and the cooperating inspection bodies or/and by the client to the inspector/expert in conjunction with an inspection shall be deemed to remain the property of ECCO and the cooperating inspection bodies or the client.

Such documentation and information may be used only for the purpose of the conduct of the planned inspection and must under no circumstances, be made available to unauthorized third parties even within the company or reproduced or copied in any way.

Immediately upon completion of the inspection, such documentation and information must be returned to ECCO.

Even where no written agreement is made between the client and ECCO to the contrary, any and all internal company documentation issued during an inspection shall be deemed to be subject to the same rules.

2. The client's documentation is to be returned to the client by the Inspector upon completion of the inspection.

The inspector undertakes to refrain during the inspection procedure from any consultative or advisory activity concerning the setting up of inspection.

The explication of the questions set and drawing of attention to any weak points disclosed, shall be deemed to be "necessarily associated with the inspection".

3. The inspector undertakes to exercise impartiality and objectivity. He undertakes to neither pass on nor make accessible to third parties either the results of the inspection or any other company and/or ECCO specific data and information, which may come into his possession.
4. The inspector also undertakes to observe strict secrecy with respect to all procedures and facts which come to his knowledge and which are associated with inspections performed or to be performed; this provision shall be deemed to apply even beyond the end of the inspection activities.
5. The inspector undertakes to participate in the regular Exchange of Experience meetings and relevant training organized by ECCO and to provide all the necessary documentation relevant to his qualification and maintenance of his appointment, without delay.
6. All the above mentioned are the obligations of employees and associates of ECCO for a period of at least two years following the cessation of their cooperation with ECCO.

In case of violation of any of these terms by an employee or partner of ECCO, this constitutes a serious reason for terminating the contract of employment or cooperation.

Moreover, the above-mentioned behavior could draw towards the employee or the partner liability for any direct or indirect loss or damage to the reputation of ECCO.

This document constitutes an integral and essential part of the contract between ECCO and its employees or partners.



ACCREDITATION & COMPETENCY

TO ENSURE OUR CERTIFICATION & INSPECTION OPERATES TO THE HIGHEST STANDARD AND GOVERNANCE, ECCO IS PROUD TO BE ACCREDITED TO THE FOLLOWING STANDARDS:

- EGAC accreditation for ISO/IEC 17020 & ILAC P15 for Inspection (Type A Inspection body)
- Inspectors are PCN & ASNT level certified
- Updated inspection facilities
- Retention and compliance to these accreditations ensures that ECCO follows a strict regime of continual monitoring and governance, enabling us to provide the highest quality of service to our clients, at all times.





OUR SERVICES >>>



THIRD PARTY INSPECTION

- NON DESTRUCTIVE TESTING
- COATING INSPECTION
- LIFTING & EARTH MOVING EQUIPMENT INSPECTION

EN / ISO QUALITY MANAGEMENT SYSTEMS DEVELOPMENT

TRANSPORTATION: RAILWAY / VEHICLES INSPECTION

THIRD PARTY INSPECTION

Our services offer third-party inspection services to meet your statutory compliance either as a planned process or in an emergency situation.

Third Party Inspection confirmation, verification and inspection services to one or more internationally recognized codes, standards, design specifications and specific technical project requirements.

We have a wide range of inspection plans to suit your need, and our experts have the experience that comes from extensive documentation and inspection activity.



INDUSTRIAL SECTORS



Oil and gas,
power generation
and distribution



Water treatment
and distribution



Pipelines, Refineries,
Chemicals
and petrochemicals



Mining



Infrastructure, Telecom,
Transportation

NON DESTRUCTIVE TESTING

Having the right systems, processes and procedures ensures consistency that is critical in complying with relevant codes, requirements, regulations and standards.

ECCO's end-to-end approach to inspection factors in accountability, consistency and compliance at every stage.

ECCO's PROVIDE A COMPLETE INSPECTION SERVICE INCLUDING MANAGING INSPECTION PROGRAMMES, AS WELL AS CONVENTIONAL AND ADVANCED NDT SERVICES, SUPPORTING ASSETS AT ALL STAGES OF THEIR LIFECYCLE.

We offering NDT facilities combined with our long standing expertise. With vast experience and knowledge in both large and small scale Inspection and NDT projects.



our specialists are also certified in accordance with ISO 9712, PCN, SNT-TC-1A. That operate 7/24 and are readily available to advise on the best method possible for your project

OUR SERVICE PORTFOLIO INCLUDES

- Surface methods (visual testing, magnetic particle testing, penetrant testing, and hardness testing)
- Volumetric methods (radiographic testing, ultrasonic testing)

PHASED ARRAY ULTRASONIC TEST (PAUT)

INSPECTION TECHNIQUE:

Phased array is an advanced pulse-echo technique utilizing multiple miniaturized transducers and time-delays to shape the ultrasonic sound beam in a desired angle and focus.

Therefore the technique has a wide range of applications.

A phased array probe houses an array of ultrasonic transducers which are acoustically insulated from each other.

By pulsing the elements with different time-delays, the angle of the ultrasonic sound is 'steered' to a specific angle, focus-point or both.

PHASED ARRAY HAS SEVERAL ADVANTAGES IN COMPARISON TO MANUAL PULSE-ECHO:

Digital storage of all data, location and system settings,
Visualization of indications in weld and/or base material,
using B-, C-, D- and S-scans (with all A-scans included),
Possibility to facilitate inspections of complex geometries.

APPLICATIONS:

With phased array there is a wide range of applications, such as n Weld inspection of vessels, pipelines and plates n Weld inspection of complex geometries, such as nozzle-welds, Flange face corrosion inspection , Fast corrosion scanning utilizing 0 degree angled wedges, Code case inspection in combination with Time of Flight Diffraction (TOFD) and/or pulse-echo.



POSITIVE MATERIAL IDENTIFICATION (PMI)

POSITIVE MATERIAL IDENTIFICATION (PMI) IS USED TO ANALYZE AND IDENTIFY MATERIAL GRADE AND ALLOY COMPOSITION FOR QUALITY AND SAFETY CONTROL

A rapid, non-destructive method, positive material identification is performed on a wide range of components and assets, and provides a semi-quantitative chemical analysis. It is used for both material verification and identification.

The method is utilized for quality control and safety compliance, and is an integral part of both production and asset integrity management across many industries including oil and gas, power, chemical, pharmaceutical, nuclear, aerospace and fabrication.

Positive material identification can prevent potential product failure in manufacturing. At oil and gas, power generation and pharmaceutical plants, pre-service and in-service inspection of critical components and welds with PMI can prevent breakdown and its costly consequences.



PMI CAN:

- Ensure products/components have been manufactured using the correct alloy
- Find potentially mixed-up alloys
- Identify if the wrong material has been used
- Ensure material conforms to the correct standard and specification (both customer and industry)
- Ensure welded components have used the correct filler material



COATING INSPECTION >>>

"DO IT ONCE, DO IT RIGHT" WITH A COATING INSPECTION

Problems can arise during the pre-treatment, application and curing phases of a coating job. Coating jobs that at first seem perfect can begin to fail.

There are so many variables in any coating application, from the environment to the material itself, that getting a perfect job is a highly skilled task.

This is why we need the coating inspection:

we need trained and certified professionals on board at every step, testing and guiding the coating process, as well as making sure the coating job is maintained.

Do it once, do it right; the cost of repairing a badly executed coating can be many times the cost to paint it in the first place.



COATING INSPECTION BEGINS WITH COATING SURVEY AND SPECIFICATION

A coating inspection is carried out by a certified coating inspector who is familiar with all the aspects that contribute to optimal performance of a coating, and the specific standards each coating should individually meet.

The coating inspection process starts with inspecting the substrate and the environment, which becomes part of a coating specification.

A coating specification is an important document: it should provide clear and precise instructions to the contractor on what is to be done and how it is to be done in order to ensure optimal performance.

Some manufacturers actually provide specification services, so that every step of the process is overseen by someone who knows the coating products inside out.



A STANDARD COATING INSPECTION CONSISTS OF 6 STEPS

Once the specification has been written, the application process must be monitored from beginning to end, from surface preparation to final color and gloss. This process generally consists of six standard steps:

1.



INSPECTING THE SURFACE PREPARATION AND PRE-TREATMENT:

The most fundamental phase of a coating inspection.

A well-prepared surface is the foundation of a successful coating.

The aspects to inspect include surface cleanliness and roughness.

There are coating inspectors who specialize in assessing surface preparation such as sand blasting.

2.



ASSESSING CLIMATE CONDITIONS

Environmental factors such as climate must be assessed to prevent the air, surface temperature, or humidity affecting the curing and adhesion of the coating.

The specification should define the optimal application conditions.

3.



MEASURING FILM THICKNESS (BEFORE AND AFTER CURING)

It is important to inspect the film thickness of powder coatings and liquid coatings before the coating cures so that any deviation from the specification can be detected and repaired before curing.

The dry film thickness is measured to make absolutely sure the film thickness is in accordance with the optimal performance of the coating.

4.



OBSERVING THE CURING RATE

The coating must be cured to the degree defined in the specification.

If the coating is not cured enough the surface lacks hardness, making the finished coating layer more vulnerable to hazards such as abrasion and chemicals.

5.



CHECKING FOR SUFFICIENT ADHESION

The current methods of testing adhesion are all destructive, so the test is usually conducted on a sample substrate.

It is crucial that the sample has undergone the exact same treatments under the exact same conditions as the real substrate.

6.



EVALUATING THE COLOR AND GLOSS OF THE CURED FILM

The color of a coating needs to match the specification, but also be consistent across the whole surface.

Gloss level is also measured, and checked for deviation.

LIFTING INSPECTION

Whether you own or operate cranes, lifting or hoisting equipment, you need to ensure that they are safe, and in compliance with statutory requirements.

That is where our crane, hoisting and lifting equipment inspection can help.

Third-party inspection of lifting equipment refers to the unbiased assessment conducted by specialized external experts, such as ECCO, to evaluate the safety, functionality, and compliance of various lifting devices.

These devices include cranes, hoists, slings, rigging gear and other lifting accessories.

Third-party inspectors, like us, ensure that these lifting equipment pieces adhere to industry standards, regulations, and safety protocols.

Our services are certified by the Lifting Equipment Engineers Association (LEEAA), underscoring our commitment to the highest global industry standards.



ADVANTAGES OF THIRD-PARTY INSPECTION

QUALITY ASSURANCE

Verification of lifting equipment's quality and adherence to industry standards.

ENHANCED SAFETY

Identification and mitigation of potential hazards, ensuring a safe working environment.

REGULATORY COMPLIANCE

Assurance that the equipment meets local and international regulations, preventing legal issues.

RISK REDUCTION

Minimization of operational risks and accidents through thorough inspections and preventive measures.

RELIABILITY

Assurance of equipment reliability, leading to reduced downtime and maintenance costs.

IMPROVED EFFICIENCY

Well-maintained equipment operates efficiently, enhancing overall workplace productivity.



EARTHMOVING EQUIPMENT INSPECTION

Earthmoving equipment, such as excavators, bulldozers, loaders, and graders, are crucial for various heavy-duty operations.

We understand the importance of maintaining the integrity and functionality of these machines to ensure safe and efficient work on construction sites or mining projects.

Our certified inspectors have extensive knowledge of earth moving equipment and industry regulations.



SAFE AND QUALITY EARTHMOVING EQUIPMENT WITH OUR HEAVY MACHINERY CERTIFICATION

To ensure reliable service and protect workers in risky environments, manufacturers of heavy machinery around the world must be certain that all applicable statutory requirements and safety standards are met without exception.

ENSURE RELIABILITY OF YOUR HEAVY EQUIPMENT - AND PROTECT WORKERS' SAFETY

Our experts certify your equipment safe and reliable to ensure your customers quality and compliant products they can depend on to protect workers, lower liability and reduce any risk of malfunction that could cause costly downtimes.



WELDING QUALITY SERVICES

We offer a complete welding support service from weld procedure writing to welder qualification, third party welder witnessing and destructive and non-destructive testing.

OUR EXPERTISE:

ECCO's welding services support customers in a diverse range of industries, all of whom share similar challenges in meeting quality, safety and compliance requirements.

We provide highly qualified and experienced personnel who understand the processes involved in the supply chain and the frequent need for speedy turnaround times.

Our experienced welding personnel have IWE, PCN and CSWIP qualifications.

They ensure our customers' quality control, weld procedures and welder certifications comply with industry recognized international and national standards.

They can work on-site within our customers' premises.



WELD AND WELDER QUALIFICATION:

ECCO offers writing of welding procedures and welding certification to British, European and American welding standards.

Our welding experts provide consultancy and certify welders to national and international standards.

ECCO supports firms in industry sectors such as construction, fabrication, automotive, rail and power generation.

Third party witnessing and invigilation can be provided at your workplace. We also offer a visual inspection of weld course to BS EN 5817 level C.

RESPONSIBLE WELDING COORDINATOR:

CE Marking for structural steel became mandatory for products sold on the EU construction market as of July 2014.

This means that all companies manufacturing or supplying structural steel for use in EU are required to have a documented welding quality management system in place and will need to either employ or have access to a RWC.

The role of the RWC is to control and supervise all welding activities, and to ensure the steel structures meet the required levels of mechanical strength, stability, serviceability and durability.

Many companies may not have the requirement for a full-time RWC. ECCO can supply the services of our qualified welding experts to act as your RWC to help your in house personnel monitor and control your welding activities.



TRANSPORTATION

RAILWAY / VEHICLES INSPECTION

TRANSPORTATION: RAILWAY / VEHICLES INDUSTRY

We provide a complete suite of non-destructing testing and metallurgical tests to detect defects and irregularities, ensuring safety and reliability in rail equipment and assets.

ECCO has an extensive experience in conventional railways, Metro and Vehicles.

ECCO CAN SUPPORT ON
VEHICLES / RAILWAY INDUSTRY FOR:

→ THIRD PARTY INSPECTION

→ NON-DESTRUCTIVE TESTING (NDT):

- Thickness Monitoring
- Ultrasonic Testing
- Phased Array UT Inspection
- Corrosion Monitoring
- Magnetic Particle Testing
- Liquid Penetrant
- Radiography
- On-Site NDT inspection

→ MATERIALS TESTING

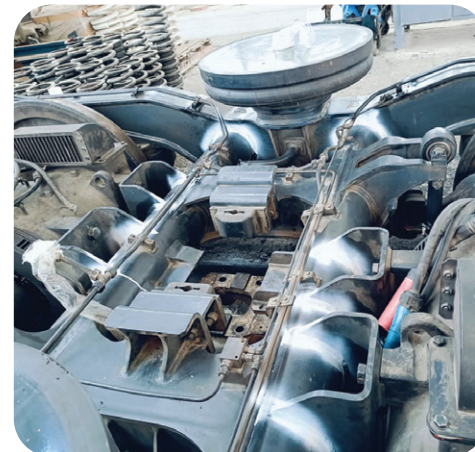
- Corrosion Testing
- Micro-Examination
- Macro-Examination
- Hardness Surveys

→ WELDING APPROVALS

- BS EN 15085
- BS EN ISO 15613, 15614
- BS EN 9606
- Other welding specifications

→ CONSULTANCY SERVICES

- Welding Consultancy
- Welding Inspection (Visual)
- Weld Procedure/Qualification Approval
- Responsible Welding Coordinator (RWC)





EN / ISO
QUALITY MANAGEMENT
SYSTEMS DEVELOPMENT

EN / ISO QUALITY MANAGEMENT SYSTEMS DEVELOPMENT



ECCO PROVIDES A GLOBAL QUALITY MANAGEMENT SYSTEM DEVELOPMENTS FOR A SEVERAL STANDARDS

CE MARK EN 1090-1 (FOR STEEL & ALUMINUM PRODUCTS):

Factory Production Control in Compliance with EN 1090 in accordance with CPR.

The Construction Products Regulation (CPR) has established harmonized standards in order to standardize the quality control of construction product manufacturing, guarantee free trade and ensure the unlimited use of qualified products within the European Union.

BS EN ISO 3834

EN ISO 3834 describes the requirements for a factory control system aimed specifically at fabricators and welding compliance to a set of standards.

EN ISO 3834 It is not an overriding quality management system but a system for the control of welding requirements that can be incorporated in to a current or intended manufacturing process to demonstrate a process driven manufacturing and inspection method that is integral to factory production control systems such as EN 1090 and EN 15085.

ISO 3834 can also benefit fabrication companies operating a ISO 9001 system where the company wish to implement and demonstrate a control of fabrication and welding function as a special process.



BS EN 15085

Manufacturer certification in accordance with EN 15085; Railway Applications – Welding of Railway Vehicles and Components, is being increasingly required by specifiers and customers of components, sub-assemblies and vehicles.

The Certification for Welding of Railway Vehicles and Components scheme demonstrates a manufacturer's competence for control of welding quality in production of railway vehicles and components and as a result is becoming a pre-qualification requirement.

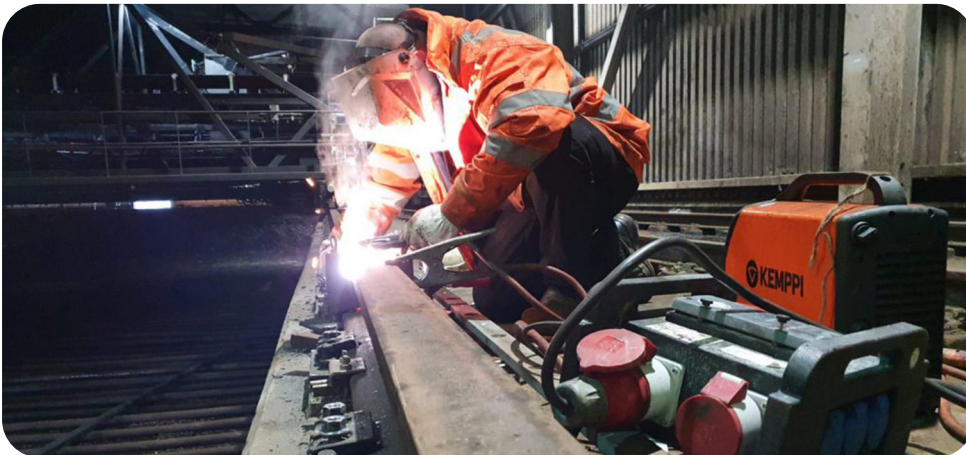
Compliance to EN 15085 certification is evidence that your operations meet the railway industry's European standard for consistency and high quality in fusion welding of materials within the manufacture and maintenance of railway vehicles, associated components and parts.

The EN 15085 standard series applies to the design, manufacturing, testing and conformity assessment of welded railway vehicles, components and assemblies. It sets out the requirements for the quality system, welding process approvals, as well as performance qualifications for the Responsible Welding Co-ordinator, welder and welding operator.



WE CAN SUPPORT WITH THE FOLLOWING INCLUDED BUT NOT LIMITED

- Initial company review and gap analysis to identify and plan your required support
- Review operating procedures
- Set out an action plan for the client and ECCO to work towards
- Set target dates for completion of key tasks
- Modify or produce new manuals, procedures and documentation
- Supply continued support through the implementation process
- Provide or assist in the resourcing of identified training requirements
- Support with certification of welding procedures (WPQR) and welders (EN ISO 15614 series and EN ISO 9606 series)
- Support with RWC appointment or RWC training
- Carry out internal audits and pre-certification audit reviews
- Work with your Management Team
- Attendance at Notified Body Audit meeting



ISO 17025

GENERAL REQUIREMENTS FOR THE COMPETENCE OF TESTING AND CALIBRATION LABORATORIES CONSULTANCY & TRAINING:

ISO 17025 is an internationally recognized standard for the management of testing and calibration laboratories. It enables laboratories across a wide range of sectors to demonstrate that they are competent, that the results they generate are reliable and accurate.

We can help you to establish and implement your laboratory quality management system, either from scratch or by formalizing and organizing processes you already have in place.

Together we can make sure you gain (and/or retain) your ISO 17025 accreditation.

ISO 17025 is relevant to you if you are looking to demonstrate the quality and competence of your laboratory, gain and maintain accreditation, and to secure the benefits of an effective and robust management system.

If you carry out laboratory testing, calibration, sampling or measurement services this standard is for you. Whether you are in healthcare, academia, research & development, environmental, chemicals, consumer products, forensics, food, water or any other testing arena, you need your customers to have full confidence in your methods and results.



ECCO CAN SUPPORT YOUR LABORATORY THROUGH THE FOLLOWING ACTIVITIES INCLUDED BUT NOT LIMITED:

- Developing and implementing a standard operating procedures
- Identifying and developing and implementing authentic work process for each of the test
- implementing appropriate global method statements for each test
- Developing technically competent employees and Awareness training
- Producing records demonstrating conformance with ISO 17025's requirements.
- Define the scope of accreditation
- Undertake measurement uncertainty analysis
Undertake inter-laboratory comparison for your test
- Training for the management system and uncertainty
- Guide on Equipment Calibration Program
- Prepare your staff to face the accreditation board
- Undertake relevant training for your employees
- Undertake schedule of internal audits & Surveillance Audit
- Act as your third-party professional laboratory/quality advisory board or quality management department.



ISO 17020

CONFORMITY ASSESSMENT REQUIREMENTS FOR THE OPERATION OF VARIOUS TYPES OF BODIES PERFORMING INSPECTION

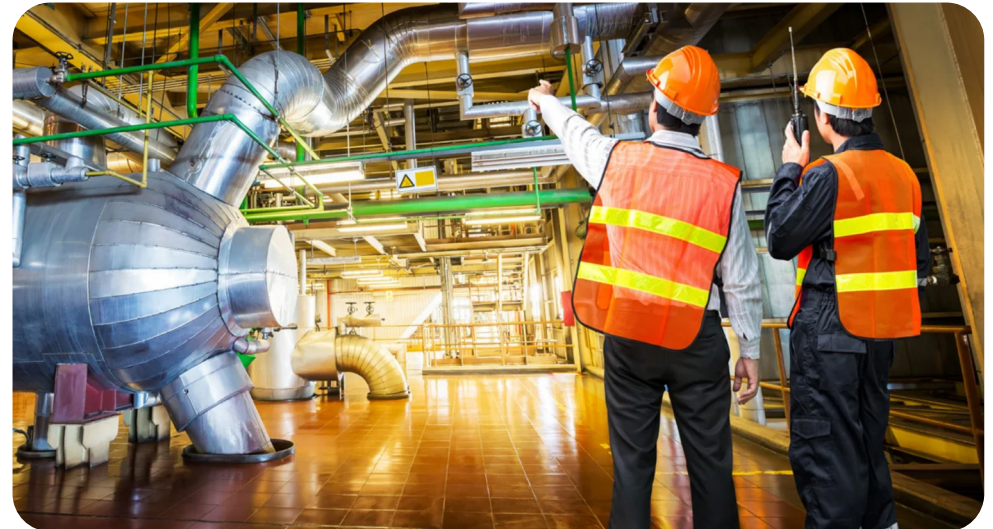
ISO 17020 is an international standard that specifies the requirements for the competence, impartiality and consistency of bodies that perform inspection activities. Inspection bodies are organizations that examine the design, construction, operation, maintenance or condition of items, products, installations, processes, work procedures or services, and determine their conformity with requirements.

Inspection bodies can be of type A, B or C, depending on their degree of independence from the parties involved.

ISO 17020 was developed by the International Organization for Standardization (ISO) and the International Electrotechnical Commission (IEC).

The standard is applicable to any stage of inspection and covers the general requirements for the management system, personnel, facilities, equipment, methods, procedures, records and reports of inspection bodies.

ISO 17020 is the procedure for Inspection body accreditation by which an authoritative body gives a formal recognition that an inspection body is competent and impartial to carry out the inspection service according to The objective of accreditation is to assure the clients of the quality of the inspection service of the inspection body as well as to avoid duplicate inspection.



ECCO CAN SUPPORT THROUGH THE FOLLOWING ACTIVITIES INCLUDED BUT NOT LIMITED:

- Developing and implementing ISO 17020 Standard.
- Requirements for independence, impartiality, integrity & Confidentiality.
- Inspection methods and procedures.
- Handling of inspection samples and items.
- Control of records.
- Undertake relevant training for your employees.
- Define the scope of accreditation.
- Procedure for protecting the integrity of data produced by the organization.
- Procedure for ensuring the security of data produced by the organization.
- Procedure for performing inspections & for avoiding deterioration or damage to inspection items Prepare your staff to face the accreditation board.
- Undertake relevant training for your employees. Undertake schedule of internal audits.
- Undertake your annual surveillance audits.
- Act as your third-party professional organization/quality advisory board or quality management department.



ISO 17024,

CONFORMITY ASSESSMENT FOR PERSONNEL CERTIFICATION:

Achieving ISO/IEC 17024 accreditation demonstrates that a certification body meets internationally recognized standards for personnel certification, which can help increase its global recognition and provide added value to both businesses and consumers.

ISO 17024: 2012 covers the international requirements for bodies operating certification of persons.

It is the most acceptable standard for personnel certification schemes the world over.

Globally accepted benchmark for organizations operating a scheme certification of persons.

Promote consumer and public confidence in the capabilities and competence of the people who provide specialized services or who create the products that support our daily lives and livelihoods.



ECCO CAN SUPPORT THROUGH THE FOLLOWING ACTIVITIES INCLUDED BUT NOT LIMITED:

- Developing and implementing ISO 17024 Standard.
- Requirements for independence, impartiality, integrity & Confidentiality.
- Scheme and certification process and procedures.
- Define the scope of accreditation.
- Procedure for protecting the integrity of data produced by the organization.
- Undertake relevant training for your employees. Undertake schedule of internal audits.
- Undertake your annual surveillance audits.



PARTNERS





ECCO

CONFIDENCE THROUGH EXPERTISE

MOBILE +2 0106 1550 001

TEL./FAX +2 02 3379 8240

E-MAIL info@ecco-me.com

Giza, Hadayek Al Ahram,
Dr. Majed Tawfik St., No 60, Apartment 9